

State of Wyoming Corner Record

(In compliance with the **CORNER PERPETUATION AND FILING ACT**, Wyoming Statutes, 1997 Section 33-29-140 et. seq., and the Rules and Regulations of the Board of Professional Engineers and Professional Land Surveyors)

Reverse side of this form may be used if more space is needed.

Record of original survey and citation of source of historical information (if corner is lost or obliterated). Description of corner monumentation evidence found and/or monument and accessories established to perpetuate the location of this corner. Sketch of relative location of monument, accessories, and reference points with course and distance to adjacent corner(s) (if determined in this survey). Method and rationale for reestablishment of lost or obliterated corner.

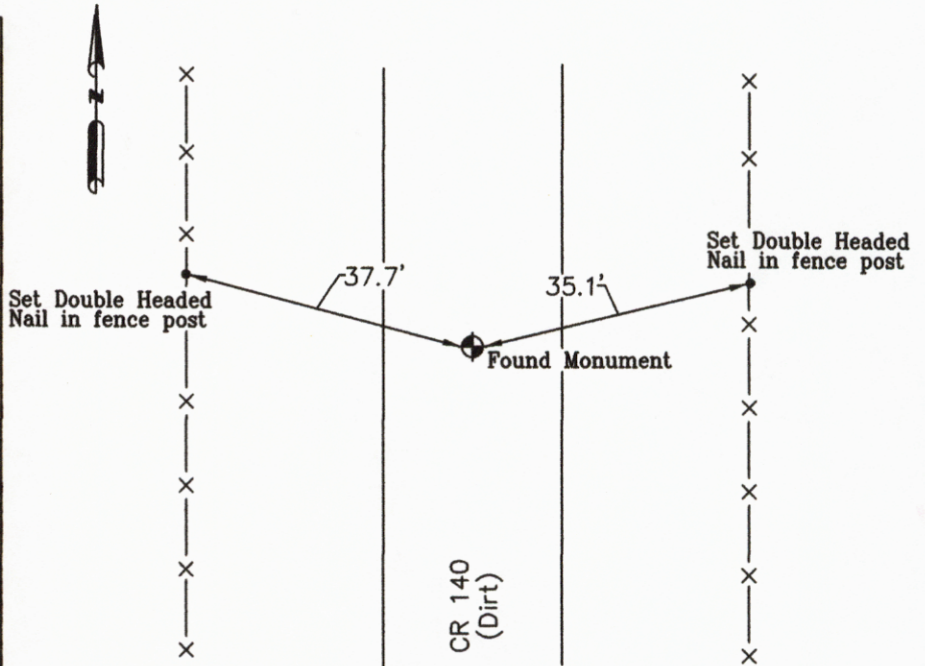
LOCATION: Northeast Corner, S. 22, T.13N., R.64W., 6th P.M., Laramie County, Wyoming.

ORIGINAL RECORD: Set a sandstone 20X9X6 for corner to section 14,15,22 and 23.

FOUND: Found 2.5' Aluminum cap in CL of county road 140 (Dirt). Stamped PLS 6097.

MONUMENT AND ACCESSORIES ESTABLISHED: Set Double headed nail in fence post 37.7' Northwest and 35.1' Northeast of corner

Origin: N000000.00, E656166.66
 H. Datum: NAD83 (2011)
 V. Datum: GEOID 12A Zone: Wyoming East
 Scale Factor: 0.9999734745
 Elevation: 5719.00
 Elevation Factor: 0.9997299003
 North: 214461.55 East: 833573.04



Date of Field Work: 5/1/2014

Office Reference: APC

Project Point No.: 100463

Cross Index Plat

	1	2	3	4	5	6	7	8	9	10	11	12	13	14	15	16	17	18	19	20	21	22	23	24	25	
A	+	+	+	+	+	+	+	+	+	+	+	+	+	+	+	+	+	+	+	+	+	+	+	+	+	A
B	+	+	+	+	+	+	+	+	+	+	+	+	+	+	+	+	+	+	+	+	+	+	+	+	+	B
C	+	6	+	+	5	+	+	+	4	+	+	+	3	+	+	+	2	+	+	1	+	+	+	+	C	
D	+	+	+	+	+	+	+	+	+	+	+	+	+	+	+	+	+	+	+	+	+	+	+	+	D	
E	+	+	+	+	+	+	+	+	+	+	+	+	+	+	+	+	+	+	+	+	+	+	+	+	E	
F	+	+	+	+	+	+	+	+	+	+	+	+	+	+	+	+	+	+	+	+	+	+	+	+	F	
G	+	7	+	+	8	+	+	+	9	+	+	+	10	+	+	+	11	+	+	12	+	+	+	+	G	
H	+	+	+	+	+	+	+	+	+	+	+	+	+	+	+	+	+	+	+	+	+	+	+	+	H	
J	+	+	+	+	+	+	+	+	+	+	+	+	+	+	+	+	+	+	+	+	+	+	+	+	J	
K	+	+	+	+	+	+	+	+	+	+	+	+	+	+	+	+	+	+	+	+	+	+	+	+	K	
L	+	18	+	+	17	+	+	+	16	+	+	+	15	+	+	+	14	+	+	13	+	+	+	+	L	
M	+	+	+	+	+	+	+	+	+	+	+	+	+	+	+	+	+	+	+	+	+	+	+	+	M	
N	+	+	+	+	+	+	+	+	+	+	+	+	+	+	+	+	+	+	+	+	+	+	+	+	N	
O	+	+	+	+	+	+	+	+	+	+	+	+	+	+	+	+	+	+	+	+	+	+	+	+	O	
P	+	19	+	+	20	+	+	+	21	+	+	+	22	+	+	+	23	+	+	24	+	+	+	+	P	
Q	+	+	+	+	+	+	+	+	+	+	+	+	+	+	+	+	+	+	+	+	+	+	+	+	Q	
R	+	+	+	+	+	+	+	+	+	+	+	+	+	+	+	+	+	+	+	+	+	+	+	+	R	
S	+	+	+	+	+	+	+	+	+	+	+	+	+	+	+	+	+	+	+	+	+	+	+	+	S	
T	+	30	+	+	29	+	+	+	28	+	+	+	27	+	+	+	26	+	+	25	+	+	+	+	T	
U	+	+	+	+	+	+	+	+	+	+	+	+	+	+	+	+	+	+	+	+	+	+	+	+	U	
V	+	+	+	+	+	+	+	+	+	+	+	+	+	+	+	+	+	+	+	+	+	+	+	+	V	
W	+	+	+	+	+	+	+	+	+	+	+	+	+	+	+	+	+	+	+	+	+	+	+	+	W	
X	+	31	+	+	32	+	+	+	33	+	+	+	34	+	+	+	35	+	+	36	+	+	+	+	X	
Y	+	+	+	+	+	+	+	+	+	+	+	+	+	+	+	+	+	+	+	+	+	+	+	+	Y	
Z	+	+	+	+	+	+	+	+	+	+	+	+	+	+	+	+	+	+	+	+	+	+	+	+	Z	
	1	2	3	4	5	6	7	8	9	10	11	12	13	14	15	16	17	18	19	20	21	22	23	24	25	

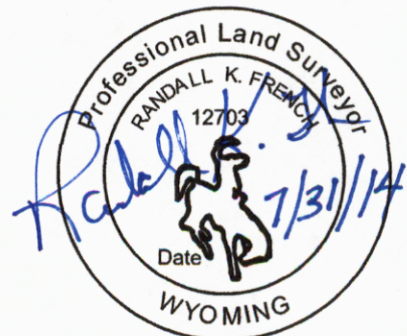
Firm/Agency, Address

PETROLEUM FIELD SERVICES
800 Werner Court, #185
Casper, WY 82601

Telephone Number: 303-928-7128

This corner record was prepared by me or under my direction and supervision.

SEAL & SIGNATURE



Corner Name Northeast Corner Section 22, T 13 N, R 64W, 6th P.M.

Cross-Index No.: N-17

County: Laramie Wyoming

SBRPEPLS/PLSW: March 1994; PLSW January 1998

